



INDOFINE Chemical Company, Inc.

121 Stryker Lane, Bldg. 30, Suite 1 • Hillsborough, NJ 08844 • U.S.A.

Phone: (908) 359-6778 • FAX: (908) 359-1179

website: www.indofinechemical.com

e-mail: chemical@indofinechemical.com

CERTIFICATE OF ANALYSIS

Catalog Number: 06-1198

Product Name: **SINAPINE THIOCYANATE**

CAS Number: [7431-77-8]

Lot Number: 1611914

Chemical Formula: $C_{17}H_{24}N_2O_5S$

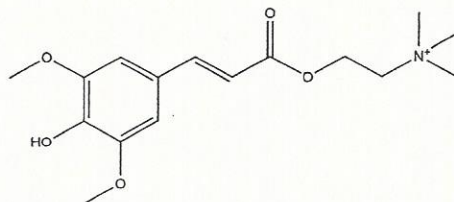
Molecular Weight: 368.45

Appearance: Light coffee color powder

Loss on Drying: 1.27%

Storage: Store at 2-8°C. Protect from light.

Purity(HPLC): 99.18%





INDOFINE Chemical Company, Inc.

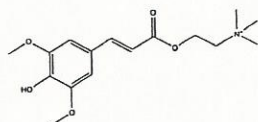
121 Stryker Lane, Bldg. 30, Suite 1 • Hillsborough, NJ 08844 • U.S.A.

Phone: (908) 359-6778 • FAX: (908) 359-1179

website: www.indofinechemical.com

e-mail: chemical@indofinechemical.com

HPLC ANALYSIS

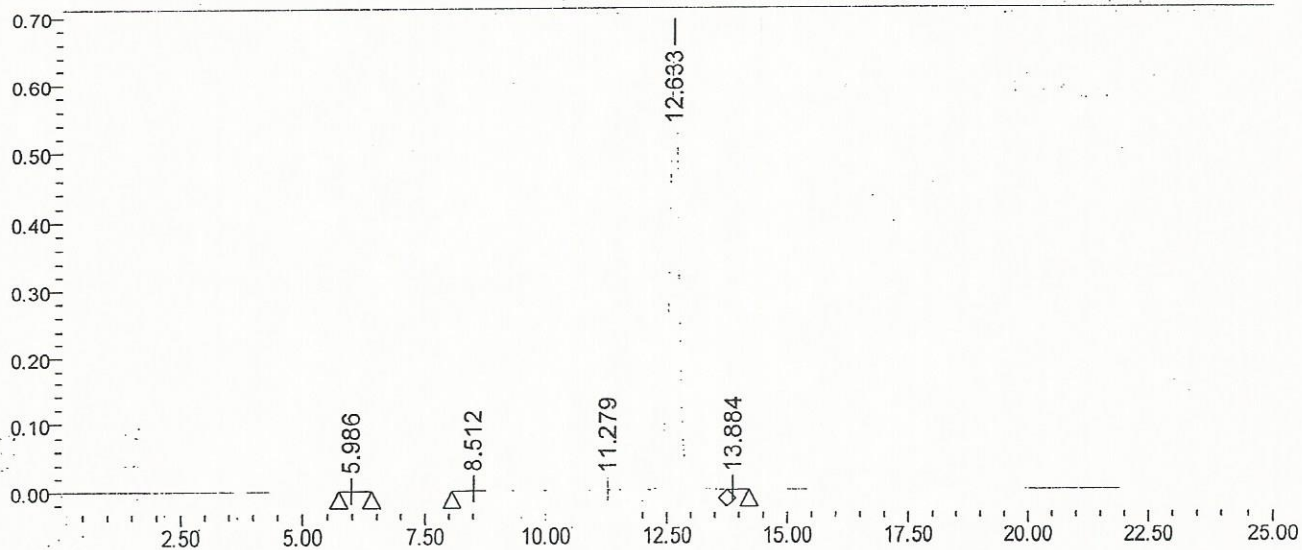


Catalog No.: 06-1198
Product Name: Sinapine thiocyanate
Lot No.: 1611914

SAMPLE INFORMATION

Sample Name:	Sinapine thiocyanate	Acquired By:	System
Sample Type:	Unknown	Sample Set Name:	
Vial:	60	Acq. Method Set:	Sinapine thiocyanate
Injection #:	1	Processing Method:	Samples
Injection Volume:	10.00 ul	Channel Name:	330.0nm
Run Time:	25.0 Minutes	Proc. Chnl. Descr.:	PDA 330.0 nm

Auto-Scaled Chromatogram



Peak Results

	RT	Area	% Area	USP Plate Count	USP Resolution
1	5.986	8009	0.09	10790.12	
2	8.512	42890	0.47	15805.13	9.51
3	11.279	14189	0.15	11943.46	7.04
4	12.633	9101039	99.18	22952.13	3.20
5	13.884	10423	0.11		